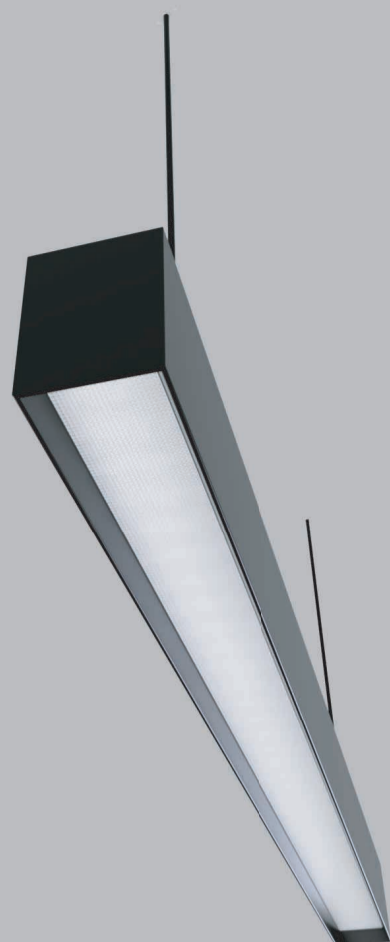


**VIRAJ 5690 DEEP  
RECEESDE**





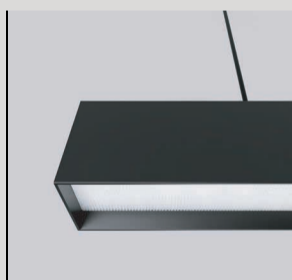
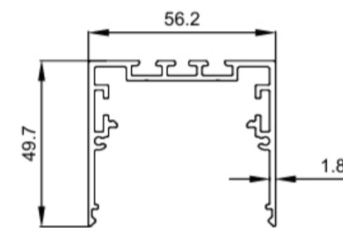
**Quick Info**

CRI ≥90  
 3000K/ 4000K/ 5700K  
 TUNABLE WHITE 2700-6500K  
 ON-OFF/ ON-OFF (FLICKER FREE)  
 DALI-2 DT6 / DALI-2 DT8/ DALI+  
 SDCM<3  
 Micro Prismatic Diffuser  
 L70 @50,000h  
 Aluminium

**Types**

Pendant/Surface

**Single Line Diagram**



**VIRAJ 5690 DEEP RECESSED**

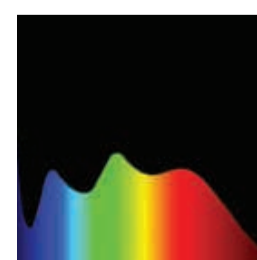
VIRAJ 5690 deep recessed light features has:

- Luminaire housing of extruded aluminium
- High-performance Micro Prismatic Diffuser
- Snap-fit system No visible screw
- Better refractive index to reduce glare
- LED PCB mounted on insert design with heat sink
- Bottom opening for easy maintenance
- Pendant with cable suspension
- M6 bolt for M6 fastener
- High-performance PMMA & Micro Prismatic Diffuser
- Energy-efficient LED with high color rendering

**Colours**



**Light Distribution**



CRI ≥90



TUNABLE WHITE

## VIRAJ 5690 DEEP RECESSED



### VIRAJ 5690 DEEP RECESSED ( DIRECT )

Product Order Code	System Power	Dimension
7006-1	7W	L = 300mm
7006-2	14	L = 600mm
7006-3	21	L = 900mm
7006-3	28	L = 1200mm
7006-3	56	L = 2400mm

### VIRAJ 5690 DEEP RECESSED ( DIRECT-INDIRECT )

Product Order Code	System Power	Dimension
7006-1	9W	L = 300mm
7006-2	18	L = 600mm
7006-3	27	L = 900mm
7006-3	35	L = 1200mm
7006-3	70	L = 2400mm

## Order Options

CCT (Colour Temperature)	
3000K	1
4000K	2
5700K	3
Tunable White 2700K-6500K	4

CRI	
>90	1

## Beam Angle

95.8°

## Control

ON-OFF		1
ON-OFF (FLICKER FREE)		2
DALI-2 DT6		3
DALI-2 DT8		4
DALI+		5

## Mounting

Pendant	1
Surface	2

## Material Colour

Black		1
White		2
Grey		3

## Photometric Details

LUMINOUS INTENSITY DISTRIBUTION

